

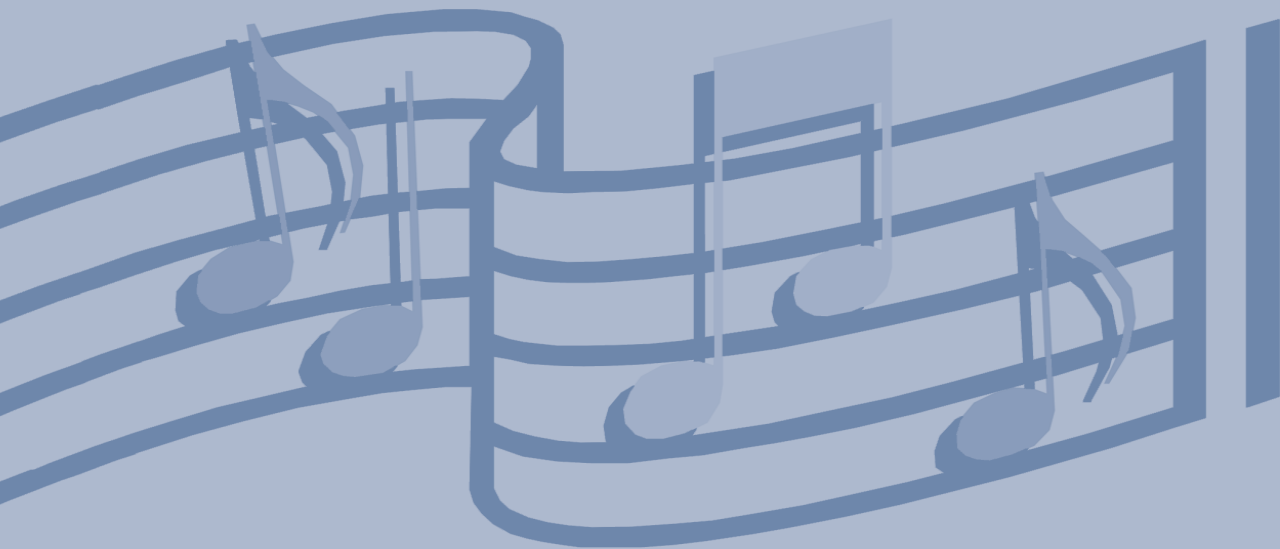
WINTERTIDE
Gjeilo

SSAATTBB, unaccompanied

WW1609

WINTERTIDE

SSAATTBB



Arranged by
Ola Gjeilo

Lyrics by
Charles Anthony Silvestri

Licensed to Lise Myrvang, limit 12 copies.



A DIVISION OF GIA PUBLICATIONS, INC.

waltonmusic.com

About the Work

Wintertide is an arrangement of one of my favorite Norwegian folk melodies, with new English lyrics written by Charles Anthony Silvestri:

Wintertide

*Stillness comes when snow is falling,
Covering all in solemn white;
Lines of grey from hearth-fires rising,
Gathering all in restful night.*

*Spirit dwells in deep reflection,
Autumn cares to lay aside,
Finding signs of new direction
In the still of Wintertide.*

*While outside the cold wind blowing,
Swirling, restless raw and rime,
Here inside a wave is growing,
Biding, silent, all in time.*

*After Winter's meditation
Gates of nature burst apart;
Comes the Springtime's inspiration,
Flowing from the ready heart.*

About the Composer

Ola Gjeilo was born in Norway in 1978 and moved to the United States in 2001 to begin his composition studies at the Juilliard School in New York City.

His albums include *Ola Gjeilo* on the Decca Classics label, a collection of choral and piano works featuring Tenebrae and Voces8. Ola's debut recording as a composer and pianist, the lyrical crossover album *Stone Rose*, was followed by its 2012 sequel *Piano Improvisations*, both on the 2L label. Phoenix Chorale's *Northern Lights* collection of Ola's choral music on Chandos was named iTunes Best Classical Vocal Album of 2012. All four recordings are available on iTunes, Amazon, Google Play, and Spotify.

A full-time composer based in New York City, Gjeilo (pronounced yay-lo) is also very interested in film, and his music often draws inspiration from movies and cinematic music.

Ola's choral works are published by Walton Music, wind band works by Boosey & Hawkes, and piano pieces by Edition Peters.

For more information, visit olagjeilo.com or find Ola on Facebook, Twitter, Instagram, and at his YouTube channel.

Duration: Approx. 3:00

Commissioned by and dedicated to Uranienborg Vokalensemble; Elisabeth Holte, conductor

Wintertide

SSAATTBB

Lyrics by
CHARLES ANTHONY SILVESTRI

Norwegian folk song
Arranged by OLA GJEILO

$\text{♩} = 98$ (in two)

Soprano 1 *mp*
Still - ness comes when snow is fall - ing,

Soprano 2 *mp*
Still - ness comes when snow is fall - ing,

Alto 1 *p*
Still - ness comes when

Alto 2 *mp* *p*
Mm, _____ Still - ness comes when

Tenor 1 *mp* *p*
Mm, mm, mm, mm, Still - ness comes when

Tenor 2 *mp* *p*
Mm, mm, mm, mm, Still - ness comes when

Bass 1 *mp* *p*
Mm, mm, mm, mm, Still - ness comes when

Bass 2 *mp* *p*
Mm, mm, mm, mm, Still - ness comes when _____

$\text{♩} = 98$ (in two)

Piano (for rehearsal only)

Licensed to Lise Myrvang, limit 12 copies.

5

S1
Cov' - ring all in sol - emn white; Lines of grey from

S2
Cov' - ring all in sol - emn white; Gath' *p*

A1
snow is fall-ing, is fall-ing, Lines of grey from *mp*

A2
snow is fall-ing, is fall-ing, Lines of

T1
8 snow is fall-ing, is fall-ing, Lines of

T2
8 snow is fall-ing, is fall-ing, Lines of

B1
snow is fall-ing, is fall-ing, Lines of

B2
snow is fall - ing, Lines of

5

9

S1
 hearth-fires ris - ing, Gath' - ring all in rest - ful night.

S2
 - ring all in rest - - ful night.

A1
 hearth-fires ris - ing, Gath' - ring all in rest - ful night.

A2
 grey from hearth - fires ris-ing, ris - ing,

T1
 8
 grey from hearth - fires ris - ing, ris - ing,

T2
 8
 grey from hearth - fires ris-ing, ris - ing,

B1
 grey from hearth - fires ris-ing, ris - ing,

B2
 grey from hearth - - fires ris - ing,

9

13 *mf*

S1 Spir - it dwells in deep re - flec - tion, Au - tumn cares to lay a - side,

mp

S2 Spir - it dwells in deep re - flec - tion,

mf

A1 Spir - it dwells in deep re - flec - tion, Au - tumn cares to lay a - side,

mp

A2 Spir - it dwells in deep re - flec - tion,

mp

T1 Spir - it dwells in deep re - flec - tion,

mp

T2 Spir - it dwells in deep re - flec - tion,

mp

B1 Spir - it dwells in deep re - flec - tion,

mp

B2 Spir - it dwells in deep re - flec - tion,

13

17

S1
Find - ing signs of new_ di - rec - tion In_ the still_ of Win - ter -

S2 *mf*
Find - ing signs of new_ di - rec - tion In_ the still_ of Win - ter,

A1 *mp*
Find - ing signs of new di - rec - tion

A2
Find - ing signs of new di - rec - tion,

T1
Find - ing signs_ of new di - rec - tion,

T2
Find - ing signs_ of new di - rec - tion

B1
Find - ing signs_ of new di - - rec - tion,

B2
Find - ing signs of new di - rec - tion, of

17

21

S1 *mp* tide. *p* While_ out - side_ the

S2 *p* new di - rec - tion, *p* While_ out - side_ the

A1 In_ the still of Win - ter - tide. *p* While out -

A2 *p* new di - rec - tion, *p* (h) While out -

T1 *p* new di - rec - tion, *p* While out -

T2 In_ the still of Win - ter - tide. *p* While_ out - side_ the

B1 *p* new di - rec - tion, *p* While out -

B2 *p* new di - rec - tion, *p* While_ out - side_ the

21

24

S1
cold_ wind blow-ing, Swirl - ing, rest - less raw_ and rime,___

S2
cold_ wind blow-ing, Swirl - ing, rest - less raw_ and rime,___

A1
side the cold wind___ blow - ing,

A2
side the cold_____ wind blow - ing, -

T1
side the cold_____ wind___ blow - ing,

T2
cold_ wind blow-ing, Swirl - ing, rest - less raw_ and rime,___

B1
side the_____ cold_____ wind blow - ing,

B2
cold_ wind blow-ing, Swirl - ing, rest - less raw_ and rime,___

24

28

S1
Here in - side_ a wave is grow - ing, Bid - ing, si - lent, all_ in

S2
Here in - side_ a wave is grow - ing, Bid - ing, si - lent, all_ in

A1
Here in - side_ a wave is

A2
Here in - side a wave_____ is

T1
8 Here in - side a wave_____ is_____

T2
8 Here in - side_ a wave is grow - ing, Bid - ing, si - lent, all_ in

B1
Here in - side a_____ wave_____ is

B2
Here in - side_ a wave is grow - ing, Bid - ing, si - lent, all_ in

28

32

S1 *f*
time._____ Af - ter Win - ter's med-i - ta-tion Gates_ of na - ture

S2 *mf*
time._____ Af - ter Win - ter's med - i -

A1 *mf*
grow - ing, Af - ter Win - ter's med - i -

A2 *mf*
grow - ing, Af - ter Win - ter's med - i -

T1 *f*
grow - ing, Af - ter Win - ter's med-i - ta-tion Gates_ of na - ture

T2 *mf*
time._____ Af - ter Win - ter's med - i -

B1 *mf*
grow - ing, Af - ter Win - ter's_ med - i -

B2 *mf*
time._____ Af - ter Win - ter's med - i - ta - tion,

32

36

S1 *mf*
burst a - part; Comes the Spring - time's in - spi -

S2 *f*
ta - tion, Comes the Spring-time's in - spi-ra - tion, Flow-ing from the

A1
ta - tion, Comes the Spring - time's in - spi -

A2
ta - tion, Comes the Spring - time's in - spi -

T1 *mf*
burst a - part; Comes the Spring-time's in - spi -

T2 *f*
ta - tion, Comes the Spring-time's in - spi-ra - tion, Flow-ing from the

B1
ta - tion, Comes the Spring-time's in - spi -

B2
Gates of na - - - - - ture burst a - part;

36

40

S1 *f*
 - ra - tion, rea - - - - dy heart, _____

S2 *ff*
 rea - dy, Comes the Spring - time's in - spi - ra - tion,

A1 *f*
 ra - tion, Comes the Spring - time's _____

A2 *f*
 ra - tion, rea - - - - dy heart, _____

T1 *f*
 ra - tion, Comes the Spring - time's

T2 *ff*
 rea - dy, Comes the Spring - time's in - spi - ra - tion,


B1 *f*
 ra - tion, Comes the Spring - time's

B2 *f*
 _____ Comes the Spring - time's _____

40

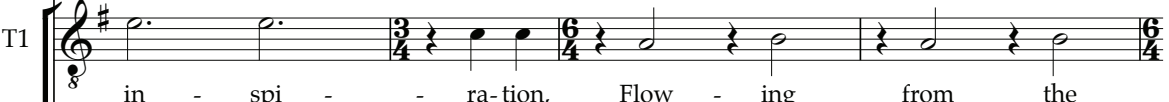
43

S1  Flow - ing from the

S2  Flow - ing from the rea - dy heart, Flow - ing

A1  in - spi - - ra - tion, Flow - ing from the

A2  Flow - ing from the

T1  in - spi - - ra - tion, Flow - ing from the

T2  Flow - ing from the rea - dy heart, Flow - ing

B1  in - spi - - ra - tion, Flow - ing from the rea - dy

B2  in - - spi - ra - tion, Flow - ing

43 

rit.

S1 *mf* *mp*
 rea - dy heart.

S2 *f* *mf* *mp*
 from the rea - dy heart.

A1 *mf* *mp*
 rea - dy heart.

A2 *mf* *mp*
 rea - dy heart.

T1 *mf* *mp*
 rea - dy heart.

T2 *f* *mf* *mp*
 from the rea - dy heart.

B1 *mf* *mp*
 heart, rea - dy heart.

B2 *mf* *mp*
 from the rea - dy heart.

47 rit.

Licensed to Lise Myrvang, limit 12 copies.

Other Walton Choral Works by Ola Gjeilo

Across the Vast, Eternal Sky
SSAATTBB • WW1494
Full Score and Parts • WW1494A

Agnus Dei: Phoenix
SSAATTBB • WW1446

Christmas Carols, Volume 1
SSAATTBB • WW1487

Christmas Carols, Volume 2
SSAATTBB • WW1488

Dark Night of the Soul
SSAATTBB • WW1463
Full Score and Parts • WW1463A

Evening Prayer
SATB divisi • WW1520

Gloria
SSAA • WLG131

The Ground
SATB divisi • WW1460
Full Score and Parts • WW1460A

The Lake Isle
SATB divisi • WW1548
Full Score and Parts • WW1548A

Luminous Night of the Soul
SSAATTBB • WW1490
Full Score and Parts • WW1490A

Northern Lights
SATB • WW1447
SSAA • WW1615

Prelude
SATB divisi • WJMS1093

Sanctus: London
SATB divisi • WW1396

Serenity (O Magnum Mysterium)
SSAATTBB • WW1480

Song of the Universal
SATB divisi • WW1642
SSAA • WW1526

The Spheres
SSAATTBB • WW1431

Sunrise Mass
SSAATTBB • WW1464
Full Score and Parts • WW1464A

Tota Pulchra Es
SATB divisi • WW1417

Tundra
SSAA • WW1459
Full Score and Parts • WW1459A

Ubi Caritas
SATB • WW1386
SSAA • WW1393
TTBB • WW1418

Ubi Caritas II: Through Infinite Ages
SATB divisi • WW1512

Sacred Heart (Ubi Caritas III)
SSAATTBB • WW1529
Full Score and Parts • WW1529A

Ubi Caritas with Piano Improvisation
Piano/Conductor's Score • WW1386A

Unicornis Captivatur
SSAATTBB • WW1400

Licensed to Lise Myrvang, limit 12 copies.